

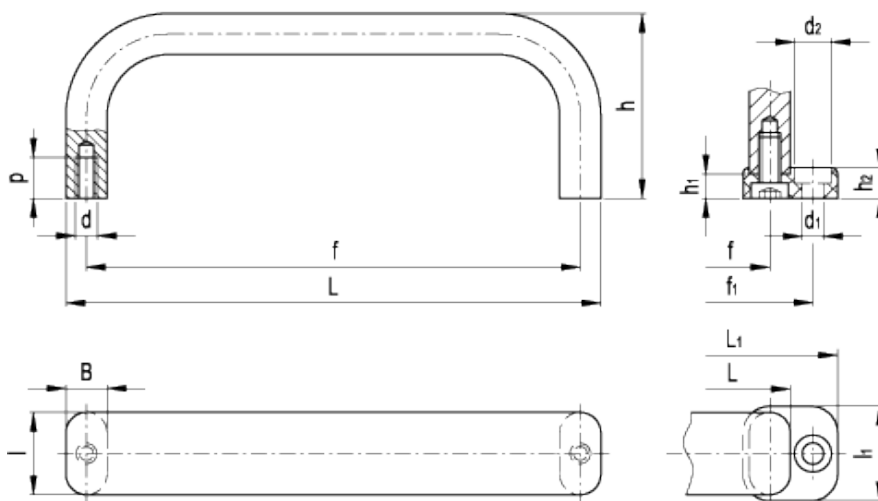
# GN 668

Handles



GN 668-A

GN 668-B



## technical informations

### Material

Aluminium. Oval flat cross section bar.

- Version BL: natural aluminium.
- Version SW: RAL 9005 black colour, matte finish, epoxy resin coating.

### Assembly

- Version A: back mounting, tapped blind holes.
- Version B: front mounting by means of two polyamide based (PA) technopolymer adapters, black colour, matte finish and two M5 screws.

Standard Elements

Main dimensions

Mounting holes

Weight

Description	L	L <sub>1</sub>	f	f <sub>1</sub>	h	h <sub>1</sub>	B	l	l <sub>1</sub>	d	p <sub>min</sub>	d <sub>1</sub>	d <sub>2</sub>	h <sub>2</sub>	g
GN 668-20-130-A-BL	130	-	120	-	45	-	10	20	-	M5	10	-	-	-	85
GN 668-20-130-A-SW	130	-	120	-	45	-	10	20	-	M5	10	-	-	-	85
GN 668-20-130-B-BL	130	153	120	141	45	6.5	10	20	23	-	-	5.2	9	7.5	100
GN 668-20-130-B-SW	130	153	120	141	45	6.5	10	20	23	-	-	5.2	9	7.5	100
GN 668-20-170-A-BL	170	-	160	-	45	-	10	20	-	M5	10	-	-	-	105
GN 668-20-170-A-SW	170	-	160	-	45	-	10	20	-	M5	10	-	-	-	105
GN 668-20-170-B-BL	170	193	160	181	45	6.5	10	20	23	-	-	5.2	9	7.5	115
GN 668-20-170-B-SW	170	193	160	181	45	6.5	10	20	23	-	-	5.2	9	7.5	115
GN 668-20-190-A-BL	190	-	180	-	45	-	10	20	-	M5	10	-	-	-	115
GN 668-20-190-A-SW	190	-	180	-	45	-	10	20	-	M5	10	-	-	-	115
GN 668-20-190-B-BL	190	213	180	201	45	6.5	10	20	23	-	-	5.2	9	7.5	125
GN 668-20-190-B-SW	190	213	180	201	45	6.5	10	20	23	-	-	5.2	9	7.5	125
GN 668-20-210-A-BL	210	-	200	-	45	-	10	20	-	M5	10	-	-	-	125
GN 668-20-210-A-SW	210	-	200	-	45	-	10	20	-	M5	10	-	-	-	125
GN 668-20-210-B-BL	210	233	200	221	45	6.5	10	20	23	-	-	5.2	9	7.5	136
GN 668-20-210-B-SW	210	233	200	221	45	6.5	10	20	23	-	-	5.2	9	7.5	136



ELESA and GANTER models all rights reserved in accordance with the law. Always mention the source when reproducing our drawings.

STANDARD MACHINE ELEMENTS WORLDWIDE